



EMC Documentum® Connector for MetaCarta GTS

Use Geographic Text Search to Find Information Stored in EMC Documentum

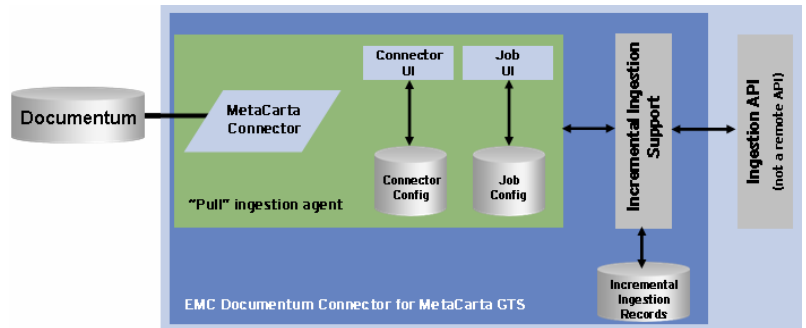


The **EMC Documentum Connector for MetaCarta GTS** enables administrators to establish and configure connections between MetaCarta GTS, GTS Analyst, and geOdrive and Documentum repositories through an out-of-the-box solution.

The Connector, which is Designed for EMC Documentum accredited, provides a convenient way for an organization's content administrator to configure connections to Documentum repositories by defining jobs to maintain synchronization between the repositories and the MetaCarta GTS index. This creates a searchable index using geography and keywords found in the documents. Once the files are processed they are available for search to end-users in Web browsers, ESRI, Google Earth, etc.

MetaCarta Connector Framework Architecture

The Documentum Connector utilizes the MetaCarta GTS Connector Framework. The Framework provides a common set of capabilities generally required to synchronize GTS with content repositories.



Documentum Connector

The MetaCarta Documentum Connector is designed specifically for the Documentum document management system as the document source.

- Secure documents according to Documentum Management System access control settings

EMC Documentum Connector: Architecture

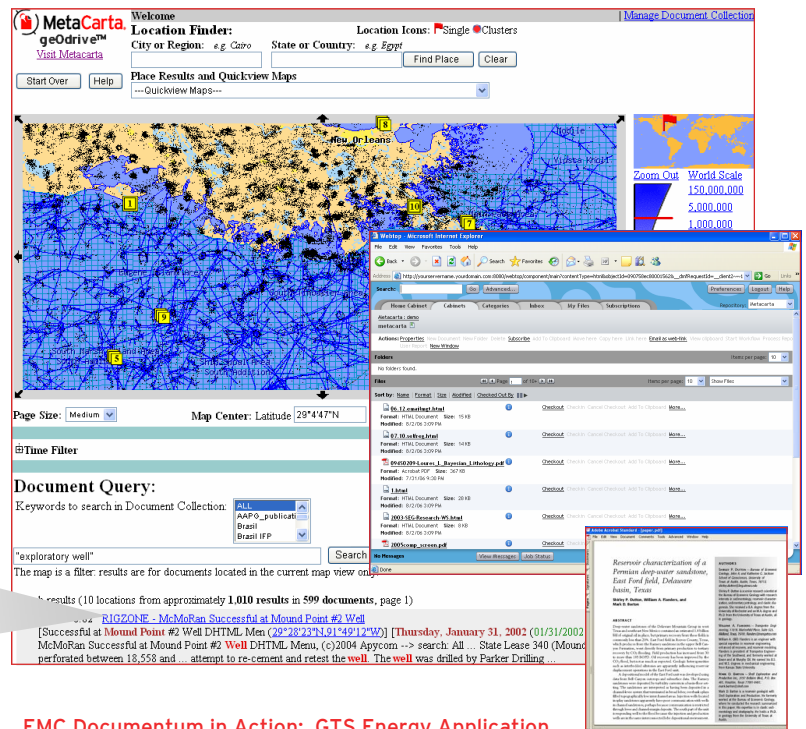
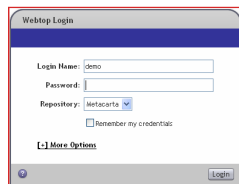
Agent Manager

Define Documentum connections between repositories and the GTS appliance.

- Schedule and manage document processing jobs for initial and incremental updates

Authority Connections

A Documentum authority connection is used to retrieve end-user document security information to ensure that GTS result sets contain only those documents which the end-user is privileged to view. Each authority connection defines how to connect to a single repository. Authority connections also enable mapping an Active Directory user name to a user name that is in a form that Documentum can recognize.



EMC Documentum in Action: GTS Energy Application

Technical Specifications

System Requirements:

- MetaCarta GTS, geOdrive version 3.5+
- EMC Documentum version 5.x

User Interface: Web browser (Microsoft® Internet Explorer, Mozilla Firefox®). Other map integrations include ESRI ArcGIS®, ObjectFX SpatialFX®, Google Earth®)

Supported Document Types: The Documentum Connector supports all documents compatible with MetaCarta GTS or geOdrive. The formats currently supported include:

- ASCII Text Files with or without extensions (.txt, etc...)
- HTML Documents (.htm, .html)
- Adobe Acrobat files (.pdf)
- Adobe PostScript files (.ps)
- Microsoft Word documents (.doc)
- Microsoft Excel spreadsheets (.xls)
- Microsoft PowerPoint presentations (.ppt)
- Rich Text Format documents (.rtf)

Connector Framework

The Framework has a Java-based plug-in model for connectors and includes the ability to provide corresponding Java-based authority plug-ins, which look up user authorization information at search time. The Framework also provides a web-based user interface that allows plug-ins to be configured, and ingestion jobs to be declared and executed.

- Unified architecture for multiple connectors
- Integrated Web UI for connection and job setup/management
- API for rapid connector development
- Report on job execution statistics

Automatic Document Change Detection

Incremental updates are driven by the connector, which detects changes that occurred to the repositories between job runs. The Connector Framework specifically detects and properly handles document or folder additions, document or folder deletions, and document modifications. In the case of additions, new documents are ingested into the index. In the case of deletions, deleted documents are removed from the index. In the case of modifications, the newer version of the document is ingested into the index.

The GTS Documentum Connector will index the most recent version of any given document in the repository.

Document Ingestion

The Documentum Connector and the Connector Framework manage synchronization with Documentum repositories through jobs. Jobs can be scheduled to run regularly, on-demand, or continuously. Each job connects to a single repository using a single repository connection.

Administrators can define, edit, and delete ingestion jobs. Ingestion jobs are specific descriptions of jobs to be ingested, plus times and methods for performing the ingestions. Typically, jobs are meant to run multiple times to capture document updates and deletions.

Document Access Control

For Documentum-based documents to be returned from a search, the Connector must be used in conjunction with some form of authentication. Both Active Directory authentication and Basic HTTP Authentication are supported.

Logging

Logging is provided for all ingestions and deletions. Error logging is also provided and is enabled by default. Logging can be independently enabled for the following kinds of Connector Framework activity:

- Ingestion
- Connector activity
- Authority connector activity
- Job activity
- Thread activity
- Database access

© MetaCarta, Inc. All rights reserved.

MetaCarta's name, logo, and other marks used in connection with its products and services are registered or unregistered trademarks of MetaCarta and are protected by U.S. and international trademark laws. You may not use any of MetaCarta's trademarks without the express written consent of MetaCarta. The names of all other products and services mentioned may be trademarks or service marks of their respective owners and are hereby acknowledged.

Part number MC_DCTM-A2006AB-01

MetaCarta GTS Interface

The screenshot displays the MetaCarta GTS web interface. At the top, there is a 'Welcome' message and a 'Location Finder' section with input fields for 'City or Region' (containing 'laos') and 'State or Country' (containing 'e.g. Egypt'). Below this is a 'Place Results and Quickview Maps' section showing a map of Southeast Asia with a red outline highlighting a region. The map includes labels for various countries and cities like Burma, Laos, Vietnam, and Thailand. A 'Zoom Out' and 'Zoom In' control is visible on the right side of the map. Below the map, there are controls for 'Page Size' (Medium), 'Map Center' (Latitude 20°53'48"N, Longitude 101°33'10"E), and 'Scale' (1:1,577,883). The 'Document Query' section at the bottom includes a search bar with the keyword 'h5n1', a 'Search' button, and a 'Document Icons' section with radio buttons for 'Single', 'Cluster', and 'Stack'. The search results show 9 locations from approximately 43 results in 42 documents, with a link to a National Geographic News Photo Gallery.



Email: info@metacarta.com
Phone: 617-661-6382
www.metacarta.com
MetaCarta Corporate